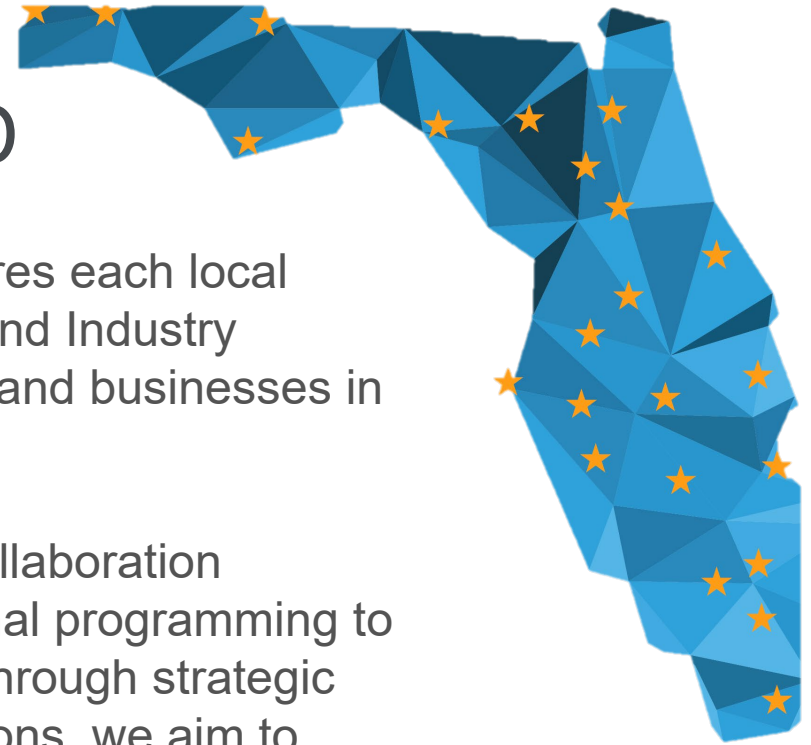


CONSORTIUM BACKGROUND

Signed into law May 15th, 2024, F.S. 445.007(15) requires each local workforce development board to create an Education and Industry Consortium composed of representatives of education and businesses in the local service area.

Purpose: The purpose of the consortium is to foster collaboration between education and industry to help align educational programming to address evolving workforce needs in our community. Through strategic partnerships, data-driven insights and innovative solutions, we aim to create strategies to empower learners and support businesses in building a skilled and adaptable workforce.



Talent Needs of Local Industry
Targeted Sectors



Education Offerings Available



Labor Market Information
Talent Pipeline

Grow, Retain, Attract

NAICS	Industry	Current			5-Year History		5-Year Forecast		
		Empl	Avg Ann Wages	LQ	Empl Change	Ann %	Total Demand	Empl Growth	Ann % Growth
11	Agriculture & Agritechnology	2,528	\$43,420	0.73	-856	-5.7%	1,811	239	1.8%
31-33	Advanced Manufacturing	20,144	\$73,714	0.89	1,947	2.1%	12,484	1,973	1.9%
48,49	Logistics, Supply Chain & Distribution	32,893	\$52,960	2.24	9,880	7.4%	21,745	3,491	2.0%
481*	Aviation & Aerospace	324	\$73,678	0.12	89	6.6%	205	38	2.3%
62	Health Sciences	37,609	\$61,107	0.85	6,668	4.0%	23,854	4,757	2.4%
	Total - All Industries	290,198	\$54,557	1.00	38,631	2.9%	193,103	31,023	2.1%

Source: JobsEQ

Data as of 2025Q2

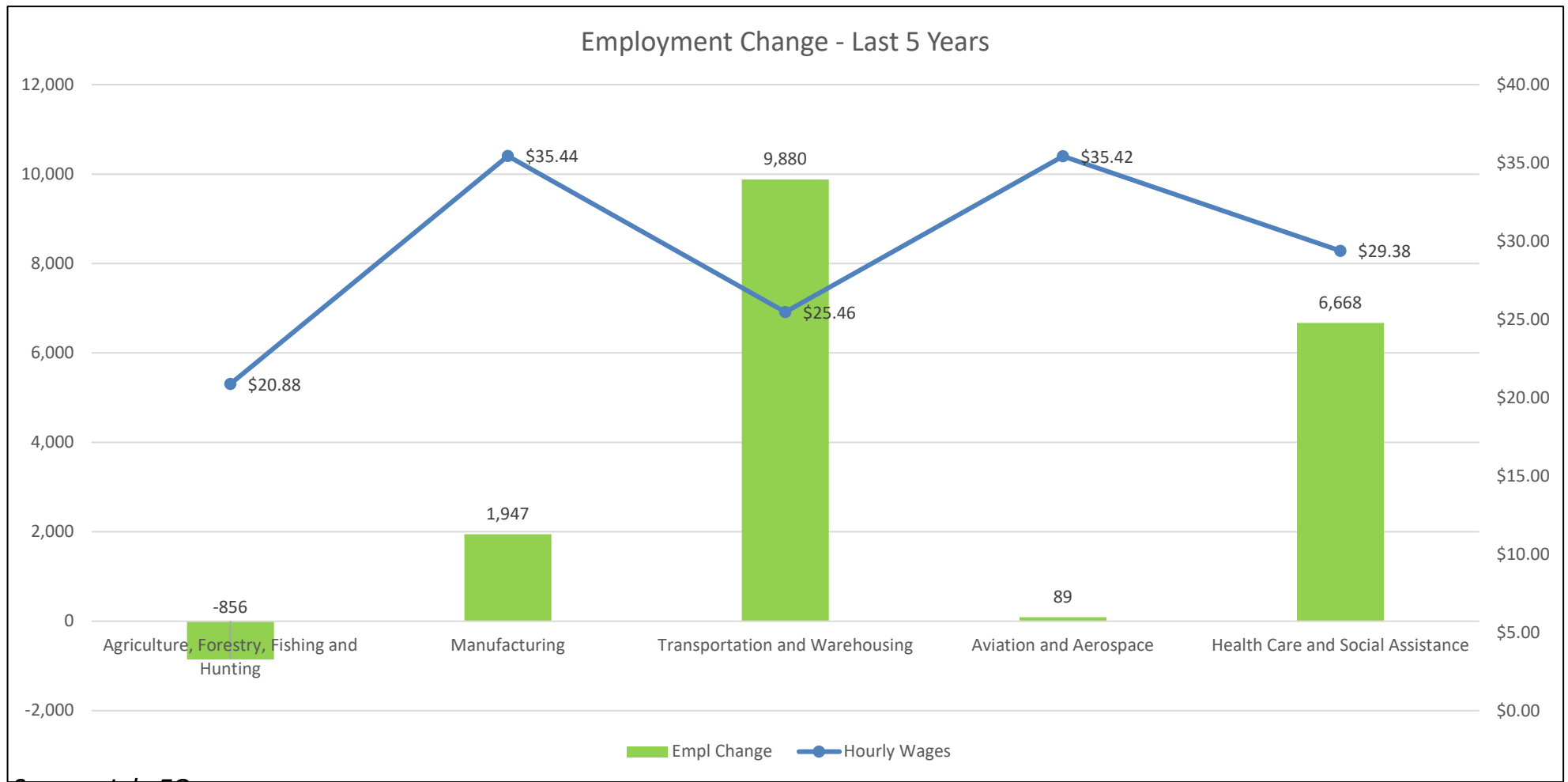
Note: Figures may not sum due to rounding.

1. All data based upon a four-quarter moving average

Exits and transfers are approximate estimates based upon occupation separation rates.

*Aviation and Aerospace is a custom sector comprised of NAICS 334511, 336411, 336412, 336413, 481 and 4881

Employment Change by Sector Last 5 years – Polk County



Source: JobsEQ

Data as of 2025Q2

Note: Figures may not sum due to rounding.

1. All data based upon a four-quarter moving average

Exits and transfers are approximate estimates based upon occupation separation rates.

NAICS	Industry	Current			5-Year Forecast				
		Employed	Avg Ann Wages	LQ	Total Demand	Exits	Transfers	Growth	Ann % Growth
11	Agriculture & Agritechnology	2,528	\$43,420	0.73	-856	-5.7%	1,811	239	1.8%

Top Agriculture Occupations by Total 5 Year Demand

SOC	Occupation	Current		5-Year Demand			
		Empl	Avg Ann Wages	Exits	Transfers	Empl Growth	Total Demand
45-2092	Farmworkers and Laborers, Crop, Nursery, and Greenhouse	749	\$28,400	271	323	61	655
11-9013	Farmers, Ranchers, and Other Agricultural Managers	753	\$98,600	290	135	67	492
45-2093	Farmworkers, Farm, Ranch, and Aquacultural Animals	121	\$33,500	43	52	8	103
11-9199	Managers, All Other	140	\$111,200	23	35	18	76
45-2091	Agricultural Equipment Operators	67	\$36,700	25	30	9	65
45-1011	First-Line Supervisors of Farming, Fishing, and Forestry Workers	59	\$48,500	17	24	6	48
53-7064	Packers and Packagers, Hand	49	\$30,500	16	21	6	43
45-2041	Graders and Sorters, Agricultural Products	33	\$29,400	12	13	2	27
37-3011	Landscaping and Groundskeeping Workers	25	\$36,200	7	10	3	20
53-3032	Heavy and Tractor-Trailer Truck Drivers	26	\$55,800	6	8	3	18
53-7062	Laborers and Freight, Stock, and Material Movers, Hand	20	\$34,700	6	9	3	17
11-1011	Chief Executives	33	\$225,100	5	7	4	16
39-2021	Animal Caretakers	15	\$35,000	5	9	2	16
43-3031	Bookkeeping, Accounting, and Auditing Clerks	21	\$50,200	7	6	2	14
45-3031	Fishing and Hunting Workers	16	n/a	5	6	1	12

NAICS	Industry	Current			5-Year Forecast				
		Employed	Avg Ann Wages	LQ	Total Demand	Exits	Transfers	Growth	Ann % Growth
31-33	Advanced Manufacturing	20,144	\$73,714	0.89	1,947	2.1%	12,484	1,973	1.9%

Top Advanced Manufacturing Occupations by Total 5 Year Demand

SOC	Occupation	Current		5-Year Demand			
		Empl	Avg Ann Wages	Exits	Transfers	Empl Growth	Total Demand
51-2092	Team Assemblers	1,218	\$41,000	274	509	118	902
51-9111	Packaging and Filling Machine Operators and Tenders	879	\$44,200	239	307	100	645
53-7062	Laborers and Freight, Stock, and Material Movers, Hand	737	\$39,000	202	308	75	585
51-1011	First-Line Supervisors of Production and Operating Workers	907	\$70,300	179	294	92	565
51-3011	Bakers	442	\$36,300	168	208	63	438
51-9061	Inspectors, Testers, Sorters, Samplers, and Weighers	486	\$48,700	125	186	46	357
53-3032	Heavy and Tractor-Trailer Truck Drivers	486	\$58,500	118	150	52	319
53-7064	Packers and Packagers, Hand	374	\$32,000	122	155	40	317
49-9041	Industrial Machinery Mechanics	431	\$69,500	97	110	84	291
49-9071	Maintenance and Repair Workers, General	436	\$54,100	110	110	45	265
51-3092	Food Batchmakers	303	\$43,000	96	125	40	260
41-4012	Sales Representatives, Wholesale and Manufacturing, Except Technical and Scientific Products	457	\$81,900	84	131	39	254
51-9011	Chemical Equipment Operators and Tenders	354	\$60,100	61	149	39	248
51-4121	Welders, Cutters, Solderers, and Brazers	362	\$52,100	60	132	41	233
11-1021	General and Operations Managers	443	\$124,800	56	131	45	232

Source: JobsEQ

NAICS	Industry	Current			5-Year Forecast				
		Employed	Avg Ann Wages	LQ	Total Demand	Exits	Transfers	Growth	Ann % Growth
48,49	Logistics, Supply Chain & Distribution	32,893	\$52,960	2.24	9,880	7.4%	21,745	3,491	2.0%

Top Logistics Occupations by Total 5 Year Demand

SOC	Occupation	Current		5-Year Demand			
		Empl	Avg Ann Wages	Exits	Transfers	Empl Growth	Total Demand
53-7062	Laborers and Freight, Stock, and Material Movers, Hand	5,483	\$40,800	1,492	2,268	506	4,265
53-7065	Stockers and Order Fillers	4,336	\$41,300	1,574	2,091	392	4,057
53-3032	Heavy and Tractor-Trailer Truck Drivers	5,856	\$60,300	1,432	1,822	684	3,938
53-7051	Industrial Truck and Tractor Operators	2,691	\$47,700	483	893	245	1,620
53-3033	Light Truck Drivers	1,393	\$63,300	350	446	209	1,005
53-1047	First-Line Supervisors of Transportation and Material Moving Workers, Except Aircraft Cargo Handling Supervisors	943	\$69,900	180	327	118	625
43-5071	Shipping, Receiving, and Inventory Clerks	1,038	\$44,400	209	305	92	606
53-7064	Packers and Packagers, Hand	830	\$37,100	247	313	4	564
53-3054	Taxi Drivers	598	\$30,900	164	158	93	415
43-5021	Couriers and Messengers	510	\$39,000	136	157	73	366
43-4051	Customer Service Representatives	407	\$42,000	123	163	32	318
43-9061	Office Clerks, General	404	\$45,700	127	127	28	282
49-9071	Maintenance and Repair Workers, General	412	\$58,300	108	108	60	276
11-1021	General and Operations Managers	479	\$117,700	62	145	61	268
43-1011	First-Line Supervisors of Office and Administrative Support Workers	372	\$72,400	82	109	41	232

NAICS	Industry	Current			5-Year Forecast				
		Employed	Avg Ann Wages	LQ	Total Demand	Exits	Transfers	Growth	Ann % Growth
481*	Aviation & Aerospace	324	\$73,678	0.12	89	6.6%	205	38	2.3%

Top Aviation and Aerospace Occupations by Total 5 Year Demand

SOC	Occupation	Current		5-Year Demand			
		Empl	Avg Ann Wages	Exits	Transfers	Empl Growth	Total Demand
53-2012	Commercial Pilots	34	\$93,700	7	14	4	25
49-3011	Aircraft Mechanics and Service Technicians	27	\$64,100	4	7	3	15
43-4181	Reservation and Transportation Ticket Agents and Travel Clerks	16	\$48,100	4	5	2	11
53-7062	Laborers and Freight, Stock, and Material Movers, Hand	12	\$40,700	3	5	2	10
53-6032	Aircraft Service Attendants	9	\$42,600	3	5	1	8
53-2031	Flight Attendants	9	\$82,200	3	4	1	8
43-4051	Customer Service Representatives	8	\$46,000	2	3	1	6
53-6051	Transportation Inspectors	8	\$150,900	2	2	1	5
51-2028	Electrical, Electronic, and Electromechanical Equipment Assemblers, Except Coil Winders, Tapers, and Finishers	7	\$46,200	2	2	1	5
53-6061	Passenger Attendants	5	\$37,000	3	1	1	5
17-2011	Aerospace Engineers	7	\$126,200	1	1	2	4
51-2092	Team Assemblers	5	\$45,900	1	2	1	4
11-1021	General and Operations Managers	7	\$150,100	1	2	1	4
11-9199	Managers, All Other	7	\$121,100	1	2	1	4
53-2011	Airline Pilots, Copilots, and Flight Engineers	5	\$282,000	1	2	1	3

Source: JobsEQ

NAICS	Industry	Current			5-Year Forecast				
		Employed	Avg Ann Wages	LQ	Total Demand	Exits	Transfers	Growth	Ann % Growth
62	Health Sciences	37,609	\$61,107	0.85	6,668	4.0%	23,854	4,757	2.4%

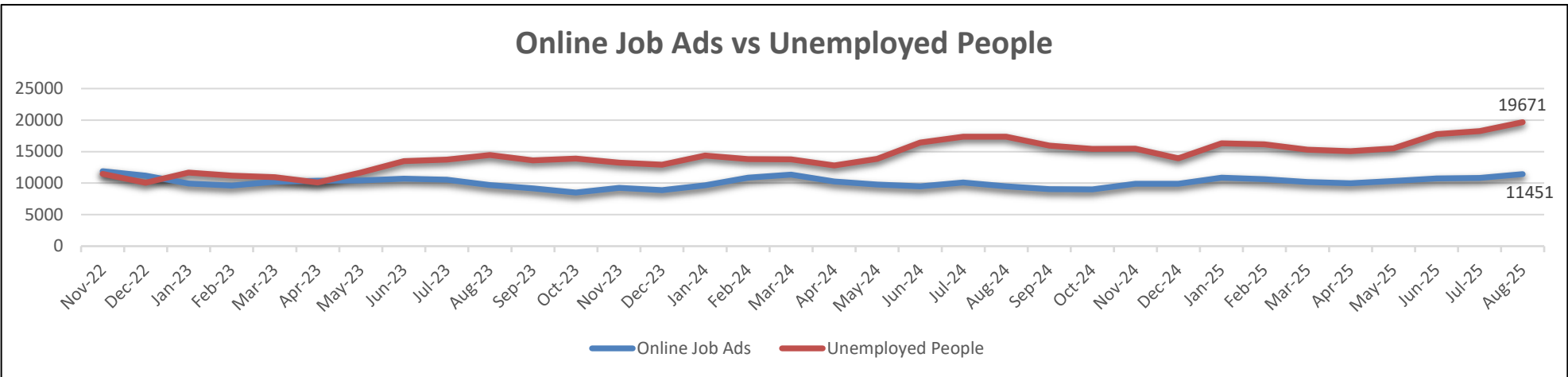
Top Healthcare Occupations by Total 5 Year Demand							
SOC	Occupation	Current		5-Year Demand			
		Empl	Avg Ann Wages	Exits	Transfers	Empl Growth	Total Demand
31-1122	Personal Care Aides	2,330	\$33,600	990	870	386	2,246
31-1131	Nursing Assistants	2,328	\$37,600	842	918	233	1,992
29-1141	Registered Nurses	4,878	\$84,300	756	567	552	1,875
31-9092	Medical Assistants	1,771	\$42,000	457	751	276	1,484
43-6013	Medical Secretaries and Administrative Assistants	1,892	\$42,200	480	511	205	1,197
39-9011	Childcare Workers	889	\$32,700	359	430	58	847
43-4171	Receptionists and Information Clerks	945	\$38,300	312	343	82	738
31-1121	Home Health Aides	826	\$33,600	256	275	137	668
11-9111	Medical and Health Services Managers	907	\$123,400	141	233	188	562
29-2061	Licensed Practical and Licensed Vocational Nurses	914	\$59,000	210	190	89	489
31-9091	Dental Assistants	566	\$47,400	165	241	72	478
25-2011	Preschool Teachers, Except Special Education	570	\$34,800	150	205	73	428
29-1171	Nurse Practitioners	652	\$125,100	92	88	193	373
43-9061	Office Clerks, General	521	\$44,200	164	164	36	365
37-2012	Maids and Housekeeping Cleaners	393	\$30,700	167	141	41	349

Source: JobsEQ

852,878
County Population
(2024)

362,567
Labor Force
(August 2025)


19,671
Regional Unemployed
(August 2025)



Source: LAUS/BLS

Job Openings Vs Unemployed by County:

Source: Florida Scorecard


OPEN JOBS


10,265
(Declining)

19,671
Unemployed Persons
(Increasing)

192
Unemployed People per 100
Jobs

Job Change Year Over Year:

Source: Florida Scorecard


EMPLOYMENT CHANGE

Employment Year Over Year
Change

-657
(Gain)

Growth Rate

-0.2%
(Negative)

Net New Jobs Needed by 2030

55,772

Thank you!

